

1. Q: On an ATX and micro-ATX combo chassis, which mounting holes are required for installing a micro-ATX motherboard?

A: Please refer to the mounting holes of ATX and micro-ATX form factor.

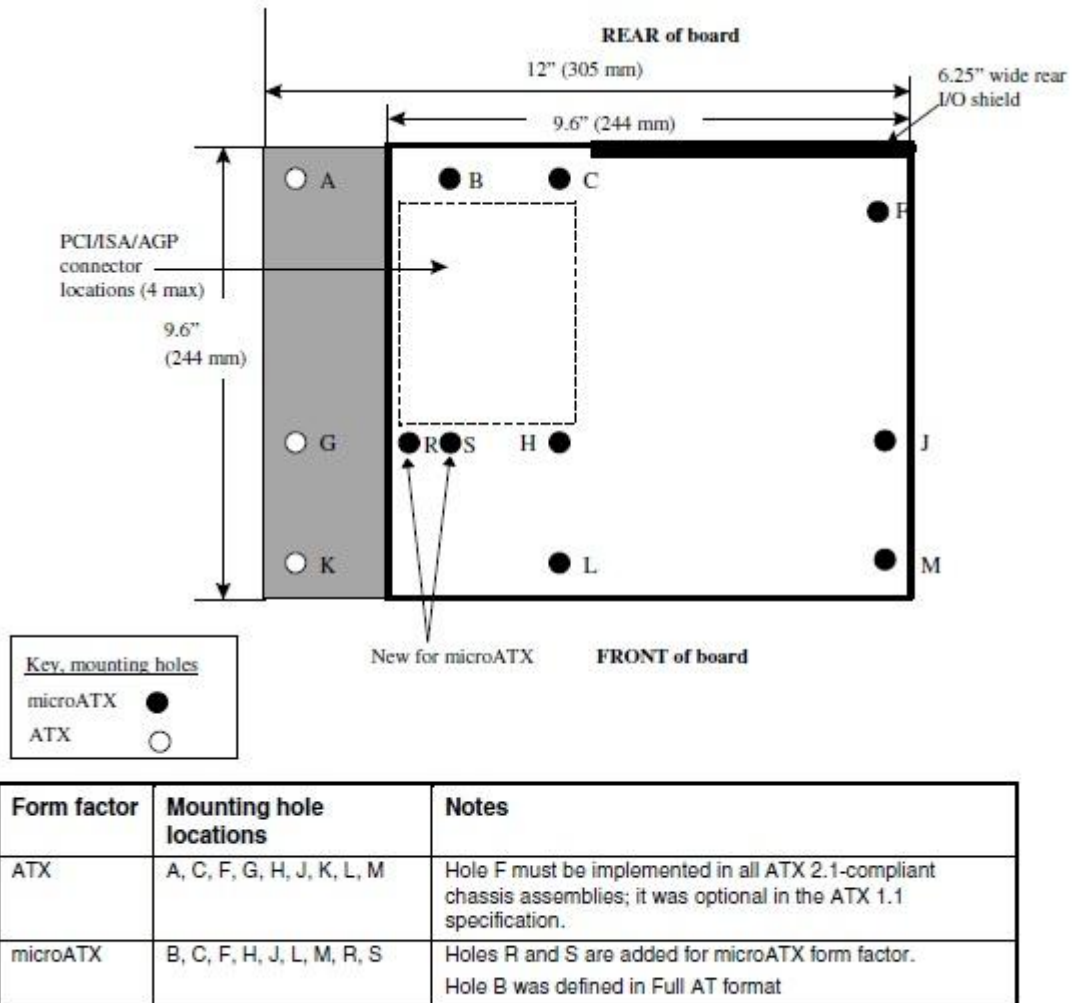


Figure 2. ATX and microATX Form Factor Mounting Holes

Step1. Please install copper pillars in the mounting holes located at B, C, F, H, J, L and M.

Step2. For location R and S, check the screw holes located on the motherboard.

Please install the copper pillars on to your motherboard.

2. Q: What are the requirements of AMD dual graphics technology on AMD A85X/A75/A55 series platforms?

- A: 1. Please use AMD Dual Graphics certified DX11 VGA cards. (EX: Radeon HD 6670/6570/6450... etc.)
- 2. Install an APU which supports AMD Dual Graphics.
- 3. Use Microsoft Windows7 or Windows8 operating system.

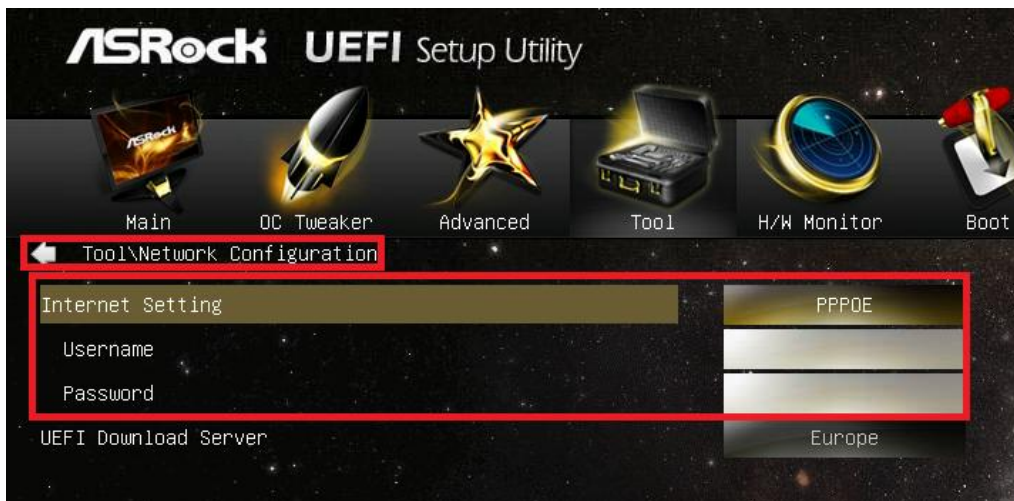
For detailed information please refer to AMD's official website:

<http://www.amd.com/us/products/technologies/dual-graphics/Pages/dual-graphics.aspx#3>

3. Q: I can't update the BIOS via Internet Flash, what should I do?

A: You may follow the steps below:

1. Please load default settings for the BIOS and make sure your system is connected to the Internet.
2. If your Internet environment is PPPoE, please enter "Network Configuration item".
Select "Internet Setting" as "PPPoE" then type in your name and password.



3. You can select the UEFI Download Server nearest to you.



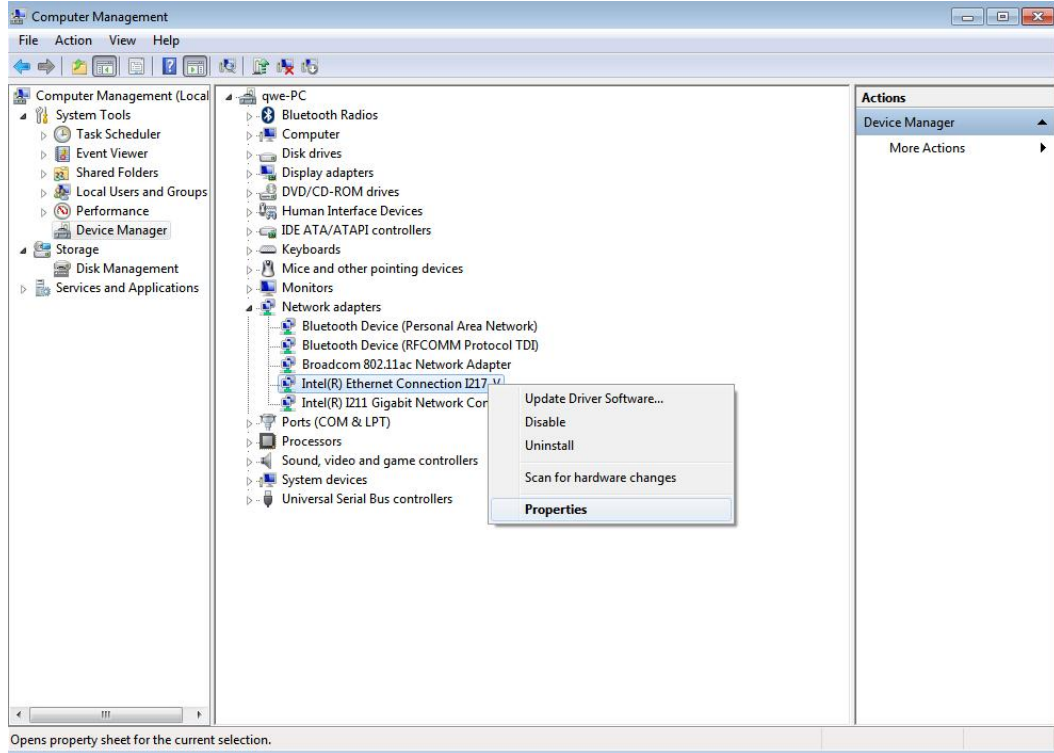
4. If the same problem still occurs, please download and update the latest BIOS from ASRock's website first, then you can update the BIOS via Internet Flash next time.

Download link: <http://www.asrock.com/support/download.asp>

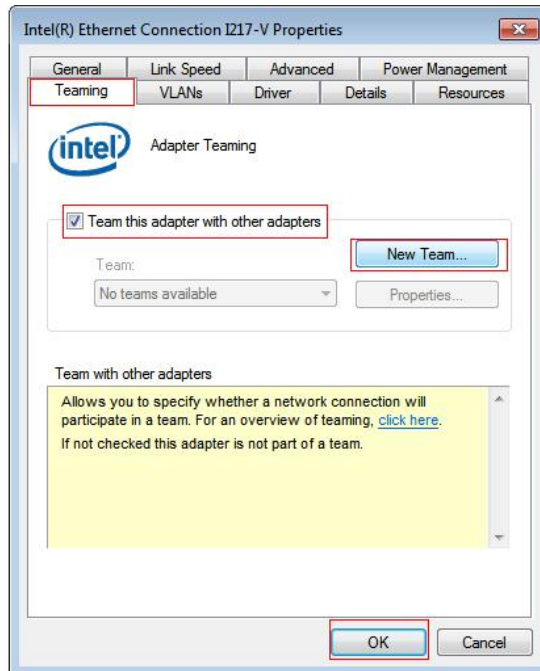
4. Q: My Z87 motherboard has two Intel onboard LANs. How do I setup the Teaming function to combine both onboard LANs?

A: Please follow the steps below to enable Teaming

Step1: After installing the motherboard and LAN drivers, restart your computer and then open **Device Manager**. Right click on the network adapter and select **Properties** under **Network adapters**.



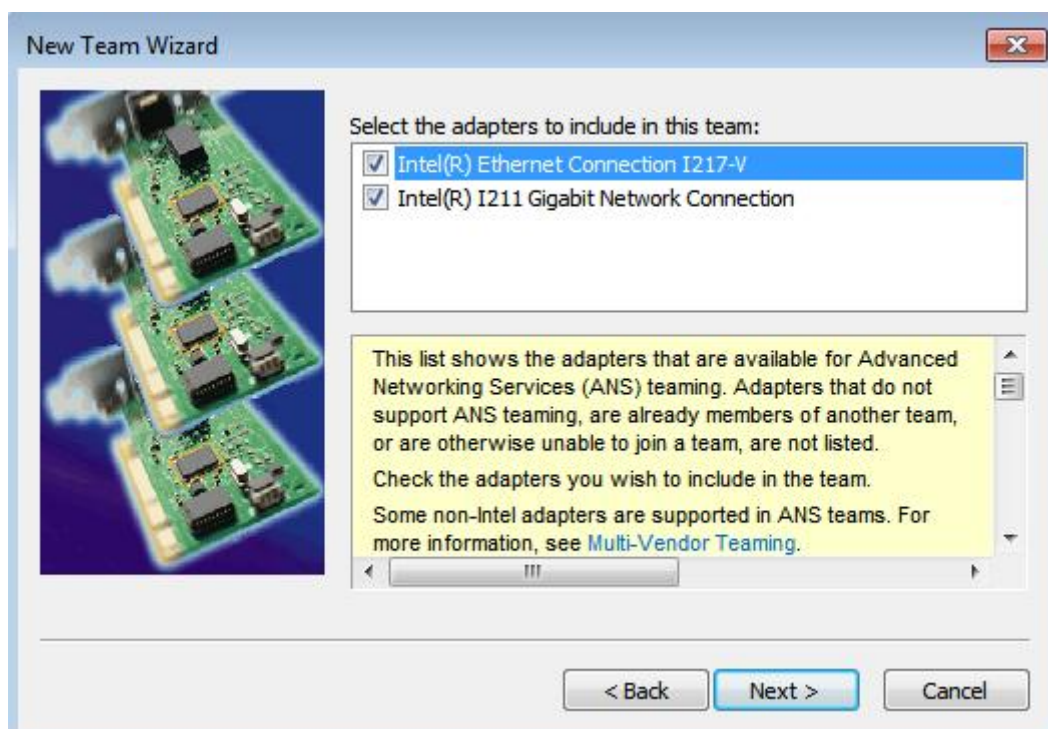
Step 2: Click the **Teaming** tab, select the **Team this adapter with other adapters** checkbox, and click **New Team**.



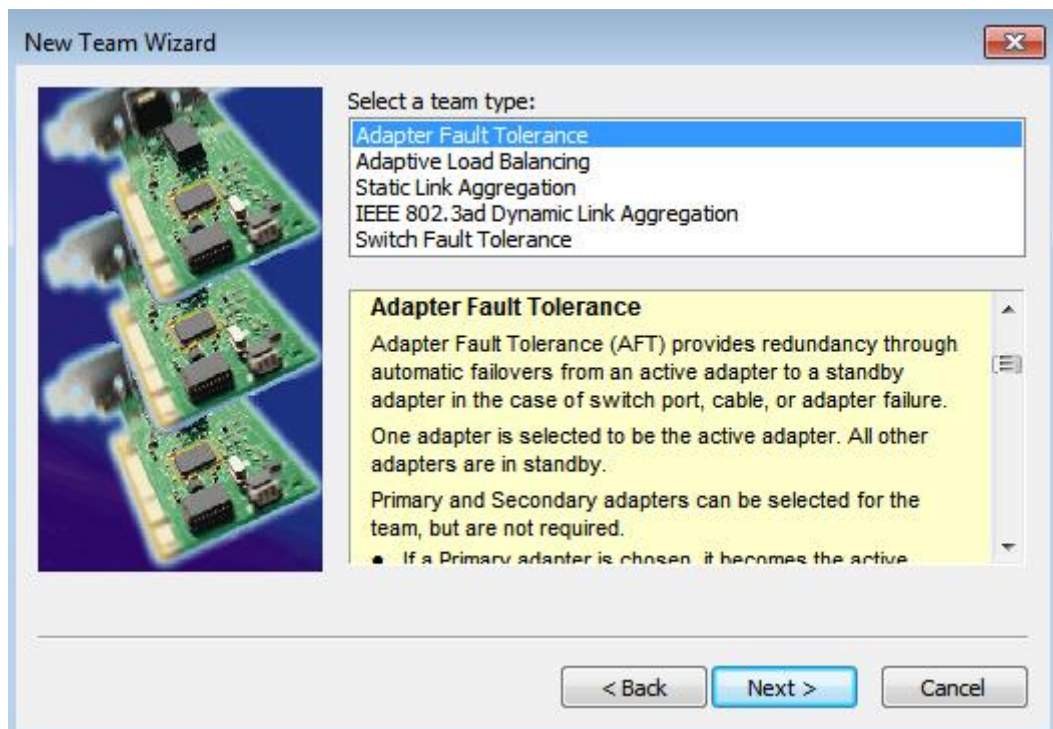
Step 3: Enter the team name.



Step 4: Select two adapters to include in the team and click **Next**.



Step 5: Select a team type and click **Next**. You can read the detailed explanation of each team type below. On the following dialog box, click **Finish** to complete the teaming configuration.



Adapter Fault Tolerance:

The team will use the healthiest high-speed adapter as primary adapter; the other adapter is in standby. If the active adapter fails, the secondary adapter takes over.

Adaptive Load Balancing:

Provides transmit traffic load balancing and fault tolerance. The team will analyze the transmit load on each member adapter and balances the traffic across member adapters

***Static Link Aggregation:**

A performance technology developed to increase throughput between switches or a server and switch. This is accomplished by bundling or channeling several ports together and showing them as a single link. This increases the total bandwidth.

***Switch (or Router) could support Teaming (IEEE 802.3ad LACP) function**

***IEEE 802.3ad Dynamic Link Aggregation:**

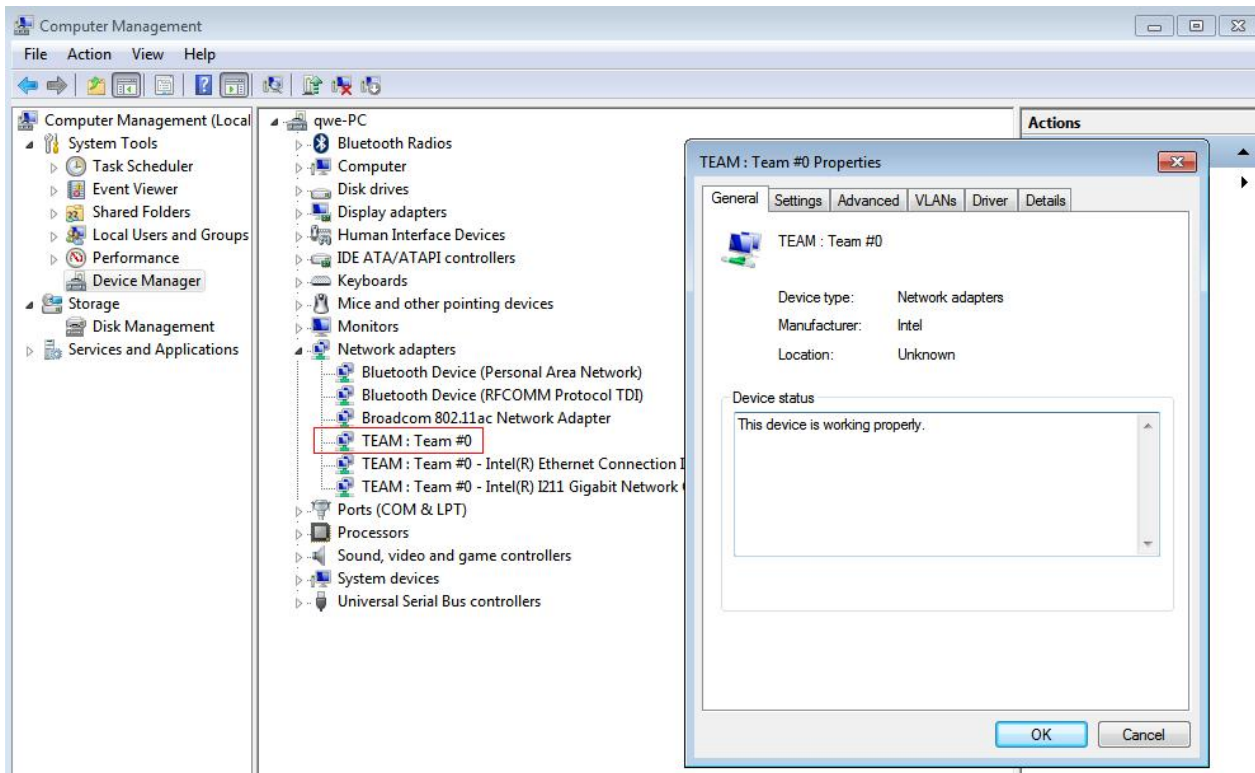
An IEEE standard for increasing throughput between switches or a server and switch. This is accomplished by dynamically bundling or channeling several ports together and showing them as a single link using Link Aggregation Control Protocol (LACP). This increases the total bandwidth.

*** Switch (or Router) could support Teaming (IEEE 802.3ad LACP) function:**

Switch Fault Tolerance: Primary adapter will automatically fail over to a standby adapter

Note: If you want the team with double bandwidth, please select Static Link Aggregation or IEEE 802.3ad Dynamic

Step 6: You can see the new team under **Network adapters**.



(Note: To delete the team, right click on the team and select **Properties\Settings\Remove Team.**)