

1. Q: After installing the onboard VGA driver on my 100 series platform with Windows 10, the system keeps on blinking and pops up "Graphics driver stopped responding and has recovered".

How can I fix it?

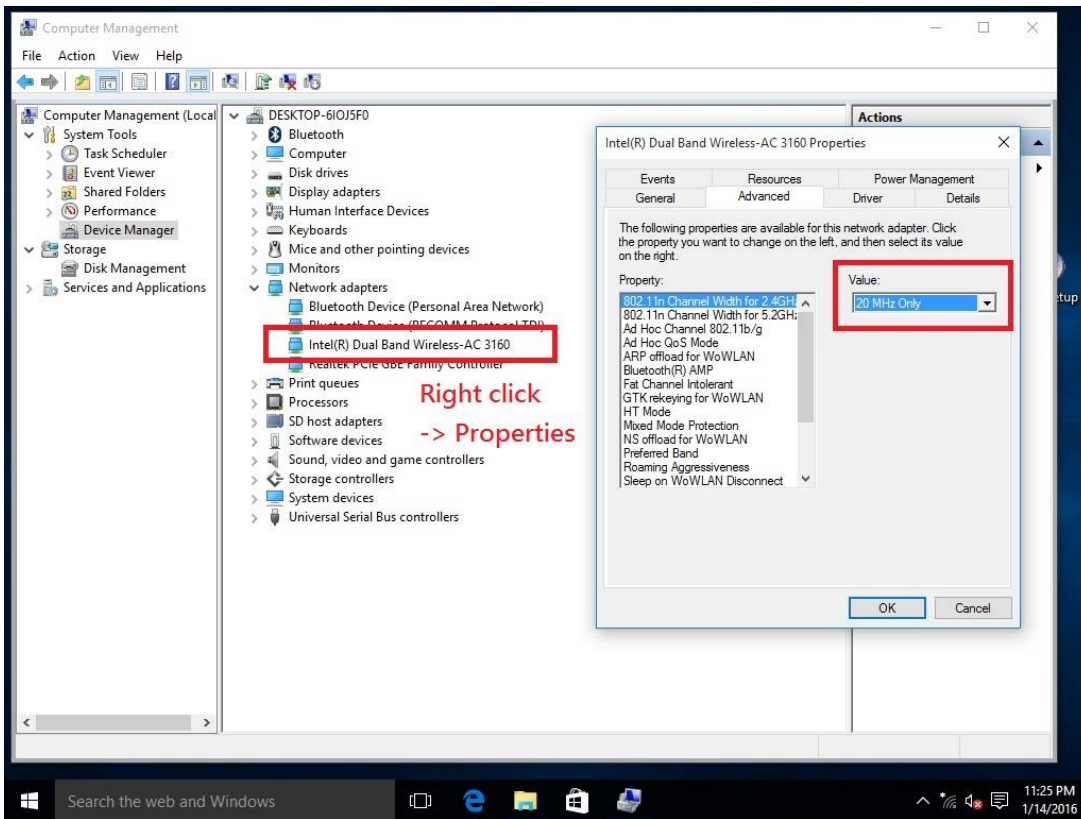
A: Please set "Package C State Support" to "Auto" in the BIOS.

(BIOS -> Advanced -> CPU Configuration -> Set "Package C State Support" to "Auto")

2. Q: I'm using a Beebox with an mSATA disk installed, but I can't establish a WiFi connection.

A: Please choose one of the options below to connect to WiFi.

1. If you would like to use 2.4GHz band, please refer to the snapshot below to set the channel bandwidth to 20MHz.



2. Use 5GHz band to establish WiFi connection.