

0. Technical Reference - Q&A

1. Q: I want to install onboard audio driver on my P4i45GV. However, when I executed the “Autorun” program of the support CD, I couldn’t find the C-Media audio driver item in the menu. What should I do?

A: Due to the wrong description of “AUTORUN” program of support CD for P4i45GV, you will not see “C-Media audio driver and application” item on “AUTORUN” menu under Windows XP. Although you cannot see the item, you still can install audio driver by clicking the “Serial ATA Driver” item. The wrong versions of support CD are I133c and I133d. Please refer the following picture to install the driver from support CD.



Please click “Serial ATA Driver” item to install C-Media audio driver.

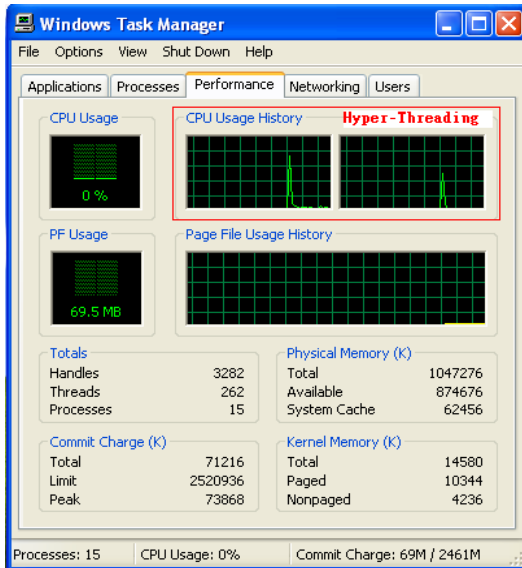
2. Q: When I use a Maxtor 250GB hard drive on my ASRock motherboards, the operating system Windows 2000 or XP only recognizes 128 GB or 137GB. How should I fix this problem?

A: Please download “Maxtor Big Drive Enabler” from Maxtor website:
http://www.seagate.com/ww/v/index.jsp?locale=en-US&name=Maxtor_Big_Drive_Enabler&vgnnextoid=535d8b9c4a8ff010VgnVCM100000dd04090aRCRD to fix the problem.

3. Q: I use a HT CPU and an ASRock motherboard which supports Hyper-Threading. How do I know if my system is working under Hyper-Threading?

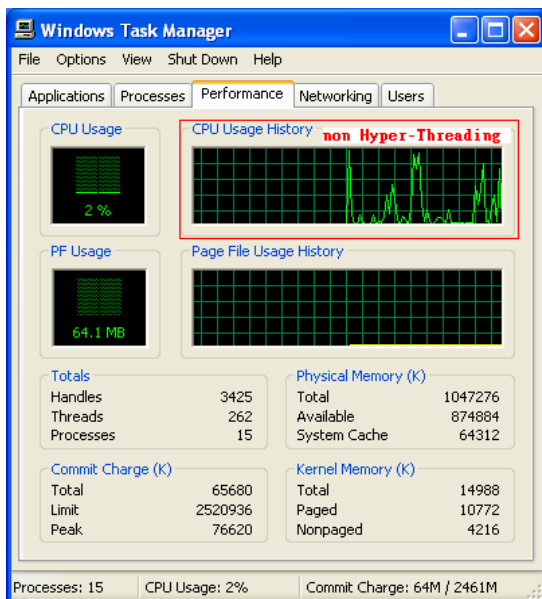
A: Please right click on the Taskbar and choose the Task Manager. In “performance” option, if you see two figures of CPU Usage History, it means that the system is working under Hyper-Threading. (Please refer to the following picture).

Hyper-Threading



If you see only one figure of CPU Usage History, it means that the system is not working under Hyper-Threading. (Please refer to the following picture).

Non Hyper-Threading



4. Q: I use K8 939 pin CPU. When I install two different sizes memory, 256 MB and 512 MB on blue DIMM slots of K8Combo-Z / 939A8X-M / K8Upgrade-1689, it only recognized 512 MB for total memory size. Why?

A: Due to the memory sizing code of K8 939 pin revision E CPU, it will auto run at dual channel mode. The two memory modules will be recognized as the same size for both DRAM (256MB + 256MB) to run dual channel mode. For optimal compatibility and reliability, it's recommended to install identical (the same brand, speed, size and chip type) DDR DIMM pair in the slots of same color.